



# MATERIAL HANDLING

## Shuttles



Nesting Shuttle



Loose Goods Shuttle

SafeLoad Shuttle Systems®



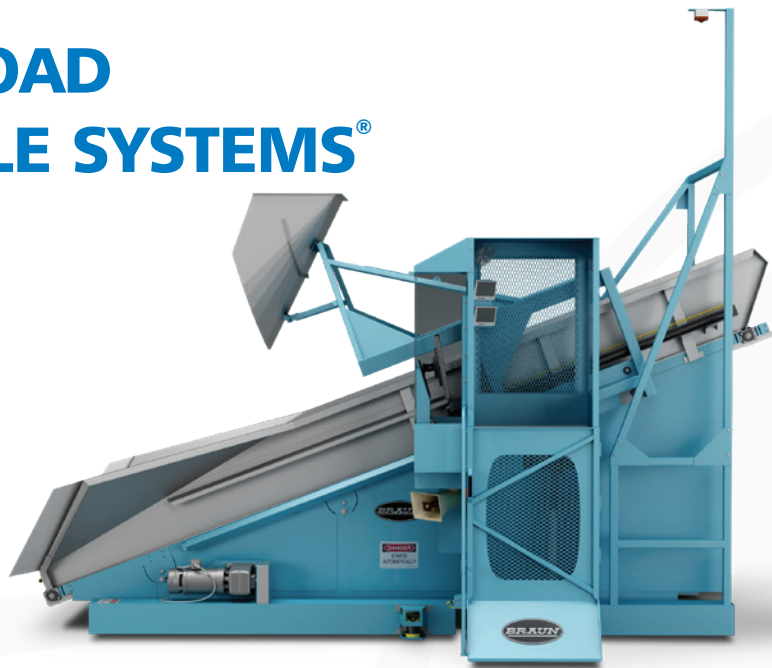
U.S.A.

ISO 9001:2015 Certified  
(Quality Management System)

All Braun Products are Proudly  
Manufactured in the U.S.A.

[gabraun.com](http://gabraun.com)

# SAFELOAD SHUTTLE SYSTEMS®



## BRAUN SAFELOAD SHUTTLE SYSTEMS®

These systems significantly enhance wash room safety! The chute loading capability provides operators a safe means for loading and unloading open pocket washers and dryers, virtually eliminating hazards associated with semi-automated and automated wash alleys. SafeLoad Shuttles with chute loading feature a hydraulically controlled loading device. Mounted onto the shuttle, it allows the operator to engage it into the washer door opening. Once engaged, the operator can then control the goods bag to open and automatically drop through the loading device into the washer. Loading washers has been determined to present the greatest safety risk in the semi-automated wash floor. This system eliminates the need to manually push bags into a washer extractor.

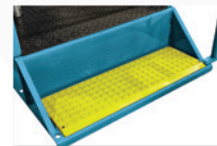
This system is available with a "cockpit" for ride-on operation, or with a remote control panel. Both facilitate continuous processing.

*SafeLoad Shuttle Systems' chute loading capability significantly enhances wash room safety! (Also available in a non-chute load configuration and non ride-on configuration).*



## SAFETY DEVICES

- On-board video cameras for monitoring travel blind spots!
- The control platform is guarded by multiple-redundant safety interlock systems
- Touch screen controls
- Shuttle Safety Mat (for ride-on configurations) This safety mat deactivates shuttle movement when it detects personnel outside the operator control cockpit and anyone on the cockpit step.



Shuttle Safety Mat

Safety Rated Door Interlock



Foot Pedal Interlock

# SHUTTLES AND MATERIAL HANDLING ELEVATORS



**Nesting Shuttles**  
Can meet the demands of any plant layout.

## Loose Goods Shuttles

*These shuttle systems are engineered for the Braun 200 lb., 450 lb. and 650 lb. Automated Open Pocket Washer/Extractor Systems.*

## BRAUN LOOSE GOODS SHUTTLES

Available in the following models:

OPSH44 for 200-500 lb. wash floors

OPSH66 for 500-700 lb. wash floors

They are engineered for the Braun 200 lb., 450 lb. and 650 lb. Automated Open Pocket Washer/Extractor Systems with auto or manual functionality. The shuttle automatically travels to the washer/extractor, aligns, and accepts goods from the tilting machine. The shuttle then travels to the next available dryer where it automatically advances the goods and loads the dryer.

## NESTING SHUTTLES

Available for Braun's 100–150 lb. and 200–220 lb. batch tunnel washing systems.

Braun Nesting Shuttles store and transport extracted cakes from the extraction press to the dryer.

These automated delivery systems can include single or multiple elevating shuttles, depending upon individual needs.

## SMOOTH, ERROR-FREE TRANSFER OF GOODS

- The ergonomics of loading and unloading Braun tunnels and dryers is greatly enhanced.
- Braun's inverter driven smart shuttle system basically eliminates much of the heavy work; providing a safe, smooth, error-free and

## SAFETY DEVICES

- Bumper and tape switch safety devices are standard on Braun Loose Goods and Nestling Shuttles. Scanners are available as an option. They ensure that shuttle hazardous motion will come to a complete stop in accordance with OSHA and ANSI safety requirements.



**Bumper and tape switch safety devices**



## SPECIFICATIONS

For detailed equipment specifications please consult with your Braun Regional Sales Manager or contact us by email at [equipmentspecifications@gabraun.com](mailto:equipmentspecifications@gabraun.com)



**ISO 9001:2015 CERTIFIED**  
(Quality Management System)

**G.A. Braun, Inc.**  
79 General Irwin Boulevard  
N. Syracuse, NY 13212

**Mail to:**  
P.O. Box 3029  
Syracuse, NY 13220-3029

**Phone**  
1-800-432-7286

**Fax**  
(315) 475-4130

**Parts Help Desk**  
1-800-432-7286 X 1

**Service Help Desk**  
1-800-432-7286 X 2



U.S.A.

All Braun Products are Proudly  
Manufactured in the U.S.A.